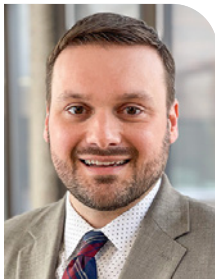




A Weekly Update
For The Employees of
North Central Health Care



NEWS YOU CAN USE



WEEKLY CONNECTION WITH JASON HAKE

In the midst of our busy schedules and demanding work environments, it's crucial to pause and reflect on the deeper meanings behind celebrations. Last week we celebrated Valentine's Day, which is often associated with romantic gestures, but it also holds a significance that extends beyond the realm of romantic love. Embracing the essence of Valentine's Day has a strong connection with our commitment to Person-Centered Service.

Valentine's Day is not merely about exchanging chocolates or flowers; it's about expressing affection and appreciate for the people who matter in our lives. It's a day to celebrate love in all its forms. This sentiment resonates strongly at NCHC, where we build meaningful relationships and deliver exceptional care.

At the heart of Person-Centered Service lies our Core Values: *Dignity, Integrity, Accountability, Partnership, and Continuous Improvement*. Just as we cherish our loved ones on Valentine's Day, we must also extend that same care and consideration to everyone we interact with professionally. Whether it's a patient seeking assistance or a colleague in need of support, every interaction is an opportunity to demonstrate our commitment to Person-Centered Service.

Valentine's Day serves as a reminder to practice our Core Values in our daily interactions. By putting ourselves in the shoes of others, we can better understand their perspectives and tailor our approach to meet their needs. Whether it's resolving a customer's issue or collaborating with team members on a project, our Core Values foster a deeper connection and enhances the quality of our service delivery.

Just as we exchange tokens of appreciation on Valentine's Day, it's important to regularly acknowledge and thank those who contribute to our success. Recognizing the efforts of our colleagues, expressing gratitude to our customers, and celebrating milestones together reinforces the value we place on each individual within NCHC.

As we bid adieu to Cupid's escapades, chocolate and heart-shaped balloons, let's carry forward the essence of Valentine's Day in our daily practices. I want to extend my deepest gratitude to our remarkable staff. Your daily commitment to Person-Centered Service is what allows NCHC to be extremely successful in providing compassionate and high-quality care to Lincoln, Langlade, and Marathon County.

Jason Hake
Managing Director of
Finance and Administration

- Prevent the Spread of Illness..... 2
- UKG Mobile App Updates..... 3
- Marathon County Employees Credit Union Referral Program 4
- Scrub Sales at MVCC and Pine Crest 5
- Foodie Forecast 6-7

Person-Centered Shout out



**Andy Rosicky,
Pharmacy**

Thank you for coming in on your day off and saving the day!

Shared By:
Jennifer Dalka



Occurrence Reporting Hotline  Only significant or sentinel events requiring immediate notification to this hotline.
x4488 or 715.848.4488



Feeling sick?

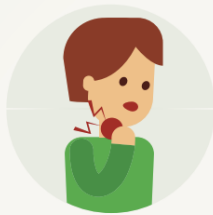
Stop the spread of illness in the workplace.
Stay home when you are sick.

Wash your hands frequently with soap & water
or use hand sanitizer when soap & water is not available.



Fever* or feeling feverish/chills

*It is important to note that not everyone with flu will have a fever.



Sore throat



Runny or stuffy nose



Cough



Muscle or body aches



Headaches



Fatigue (tiredness)

*Flu is different from a common cold.
Flu usually comes on suddenly, and in general symptoms are more intense compared to the common cold.*

If you think you may be sick, tell your supervisor or manager and **stay home from work.**



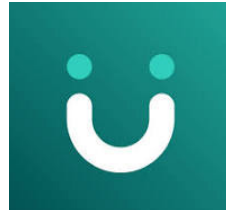
North Central Health Care

Person centered. Outcome focused.

Please, help STOP the spread of illness:

- Stay home if you are sick.
- Wash your hands frequently.
- Avoid touching your face.
- Cover your cough.
- Wipe frequently touched surfaces.

Contact your manager immediately if you are sick.



UKG PRO MOBILE APP INSTALLATION

Mobile App User Must Take Action - Check Email for Complete Instructions

UKG is pleased to announce the new UKG mobile app called UKG Pro which replaces the legacy UKG Pro Classic app set to be retired in 2024. This updated app can be used to check your PLT, pay information, etc.

In your NCHC email are steps you will need to take by April 1, 2024, on your mobile device to install the new app. You must download and install the new UKG Pro app and uninstall the old UKG Pro Classic app in order to have access to your UKG account functions.

Effective 4/1/2024, NCHC/CCITC will only provide support for the new UKG Pro mobile app.

Use these QR codes below to help you quickly locate and download the new UKG Pro Mobile app from the Apple Store and Android Store, as labeled.

Use these QR codes below to help you quickly locate and download the new UKG Pro Mobile app from the Apple Store and Android Store, as labeled.



Apple Store:



Android Store:



WORKPLACE GIVING DRAWING WINNER!

WANDA MCCARTHY
WON LUNCH FOR 2 FOR
GIVING TO THE UNITED WAY!

She was joined by Megan Treziak and had lunch with Gary Olsen!



A Monthly Gab Session with Executive Director, Gary Olsen

FEBRUARY GAB SESSION: PATIENT FINANCE

Each month, Gary Olsen will select a manager to participate in Gabbin' with Gary! That manager will be asked to invite one employee from their program to join in. The trio will connect over lunch. The topic? *It's up to you!*

Inspired by Core Values & Committed to Person-Centered Service!



Tammy Buchberger and Peggy Wedow with Gary Olsen.

PHOTO OF THE WEEK





Share the Wealth with MCECU's Referral Program!

Refer a coworker and/or family member and you both receive \$10 once the new membership is established.



**Marathon County
Employees Credit Union**

Proudly serving Government Employees since 1965

Thank you for being a member/owner of MCECU. We appreciate your trust in us. MCECU is a closed chartered credit union. This means we only serve Government Employees and their families. Our Credit Union motto is "People helping People". We would like you, as a member, to refer your coworkers and family members to join MCECU. As an incentive, we will give each of you \$10 upon their joining MCECU.

Please talk to your coworkers and family members today. We appreciate your membership!

Member

New member referred

Think MCECU First for All Your Financial Needs!

400 E Thomas Street • Wausau, WI 54403
715-261-7680



Please join us for our

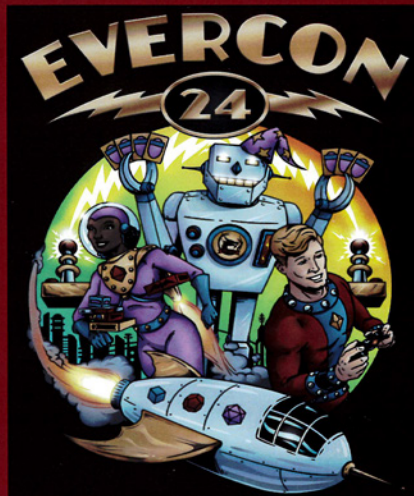
Open House

Monday
February 26th, 2024
9:00 am-2:00 pm

Or

Tuesday
February 27th, 2024
2:00 pm-7:00 pm

820 S. 8th Ave
Wausau Wisconsin 54401



MARCH 1-3, 2024

THE FUTURE OF GAMING!

EVERCON.ORG

CENTRAL WISCONSIN CONVENTION AND EXPO CENTER
10101 MARKET ST., D
ROTHSCHILD, WI 54474



Mark Your Calendar for EVERCON 24!

Help support our local schools by attending this fun event for the whole family!

In past, Evercon has raised funds to support suicide prevention initiatives locally and at NCHC.

This year, Evercon is supporting Make-A-Wish Foundation!



February 2024 Organizational Learning Modules



Each month staff are assigned 30-60 minutes of organizational training that needs to be completed by the due date.

Trainings Have Been Assigned

Log in to *UKG Pro Learning* and complete the following courses:

- NCHC Policies, Procedures, and Related Forms 2024 (10 minutes)
- NCHC Work Expectations, HR Policy Review, and Job Acknowledgment 2024 (70 minutes)
- Employee Compensation and Timekeeping Policy Review (15 minutes)
- NCHC Charge and Conviction Notifications, Background Checks – 2024 (10 minutes)
- Complete any outstanding assignments



Collection Boxes will be at MVCC Main Entrance and the Wausau Campus Employee Entrance Door #55

Donate here or local Festival Foods & Walgreens

Help for the Homeless HYGIENE DRIVE™

Feb. 11 -
Mar. 3

Help ease the financial strain on homeless and crisis programs in your community.

Most Needed Items

- | | | |
|-------------------|-------------------|-------------------|
| Bathroom Tissue | Diapers/Baby Care | Laundry Detergent |
| Cleaning Supplies | Face/Bath Soap | Paper Towels |
| Dental Care | Feminine Care | Razors |
| Deodorant | Hair Care | Trash Bags |

Donations remain in the community where collected!



Thanks to our sponsors and event partners!
Details at thefamily.net or 800-236-9364

Scrub Sale!

Mount View
March 12
1:30-3:30pm

Pine Crest
March 13
1:30-3:30pm

Payroll Deduction - Cash - Credit Card

2-Piece
Scrub Sets
ONLY \$24.95



While supplies last. Scrub sets are sold as is and cannot be sold separately.

Sign-up to get email reminders and a coupon to use on our next visit!

Scan the code with your phone:



Can't scan the code above? Go to scrubsonwheels.com/remind-me and use the code below to sign up:

74HJB8

Long Sleeve Tees
NOW AVAILABLE




Phone: 866-727-8273

Fax: 574-970-0382

www.scrubsonwheels.com



WHAT'S FOR LUNCH?

WAUSAU CAMPUS EMPLOYEE CAFETERIA
OPEN TO ALL NCHC & WAUSAU CAMPUS



BREAKFAST HOURS

8:30 AM – 10:30 AM

LUNCH HOURS MONDAY – FRIDAY

10:30 AM – 1:30 PM
HOT FOOD BAR
\$.45/OUNCE
(Weekdays Only)

GRAB-N-GO HOURS MONDAY – FRIDAY

8:30 AM – 5:30 PM

WEEKENDS:
GRAB-N-GO ONLY

THE SANDWICH & SALAD BAR IS BACK!

Make your own cold sandwich with lunch meat & fixins' *OR* self-serve at the salad bar. Salads are charged by weight.

FEBRUARY 19 – 23, 2024

	MONDAY	TUESDAY	WEDS	THURSDAY	FRIDAY
MAIN	Ranch Pork Medallions Baked Yams Mixed Veggies	Chicken Lasagna Salad Breadstick	Baked Fish Cheesy Baked Potatoes Seasoned Cabbage Rye Bread	Roast Turkey Rice Pilaf Parslied Carrots Dinner Roll	Salmon Patty Boiled Potatoes Creamed Peas
SOUP	Turkey Dumpling Soup	TBD	Taco Soup	TBD	Chili
DESSERT	Banana Split Dessert	Frosted Banana Bar	Caramel Apple Crisp	Frosted Chocolate Cake	Caramel Brownie

FEBRUARY 26 – MARCH 1, 2024

	MONDAY	TUESDAY	WEDS	THURSDAY	FRIDAY
MAIN	Cheesy Meatloaf Baked Potato Wax Beans	Vegetable Beef Stew Biscuit Creamy Coleslaw	Turkey Dumplings Mixed Vegetables Dinner Roll	Roast Beef Mashed Potatoes & Gravy Parslied Carrots	Vegetable Lasagna Breadstick Broccoli Cuts
SOUP	Cream of Potato Soup	TBD	TBD	Beef Noodle Soup	Ham & Bean Soup
DESSERT	Cherry Delight	Bread Pudding with Caramel Sauce	Cranberry Dessert	Cinnamon Baked Apples	Pumpkin Fluff



Position Postings

Title: Crisis Professional

Status: Full Time

Location: Wausau

The Crisis Professional provides crisis intervention and crisis counseling for individuals and families. Additionally they provide referral and short-term follow-up, along with collaborative community consultation and education. The Crisis Professional also provides crisis line risk assessments to evaluate and triage individuals to the most appropriate treatment setting.

Learn More or Apply Online:
www.norcen.org/Careers

bit.ly/CrisisPro24



**We want MORE
Awesome People
like YOU on
Our NCHC Team!**

**Be sure to SHARE our
Career Posts on Social!**



THE BISTRO

NOW OPEN 7 DAYS A WEEK! | WEEKDAYS 7:30AM - 3PM | WEEKENDS: 9:30AM - 5PM

THE BISTRO WILL BE CLOSED ON WEEKENDS FROM 1-1:30PM TO ACCOMODATE STAFF BREAKS

*HOT FOOD IS AVAILABLE AT THE BISTRO DAILY UNTIL 2:30PM *



SPECIAL OF THE WEEK

Hot Turkey Berry Wrap

TURKEY | SWISS | CRAISINS | SPINACH | MUSTARD/MAYO SAUCE

LATTE OF THE WEEK



Pistachio Latte

Warm notes of pistachio perfectly paired with steamed milk & espresso.

\$1 OFF LARGE LATTES EVERY MONDAY!

**Please note: All sales subject to Sales Tax.*

- build your own -
BREAKFAST SANDWICH

PICK YOUR STYLE

EGG + CHEESE 3.00

EGG, MEAT + CHEESE 4.00

PICK YOUR BREAD

CROISSANT

BAGEL

ENGLISH MUFFIN

PICK YOUR MEAT

HAM

SAUSAGE

BACON

